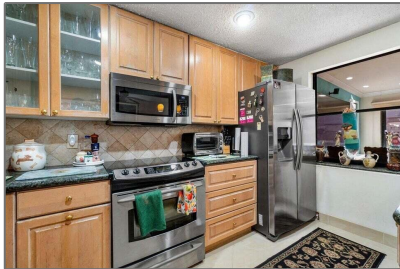


Townhouse

1,904 Sqft - 905 Sandtree Drive, Palm Beach
Gardens, Florida 33403



Basic [Details](#)

Property Type:	A
Listing Type:	Townhouse
Listing ID:	RX-10862407
Price:	\$399,999
Bedrooms:	3
Bathrooms:	2.1
Half Bathrooms:	1
Square Footage:	1,904 Sqft
Year Built:	1980

Features

✓	Heating System:	Central
✓	Cooling System:	Central
✓	Furnished:	Unfurnished

Address [Map](#)

Country:	US
State:	FL
County:	Palm Beach
City:	Palm Beach Gardens
Zipcode:	33403
Street:	Sandtree
Street Number:	905
Longitude:	W81° 54' 18.4"
Latitude:	N26° 48' 8.3"



Bill Gould

 <http://www.exclusivebetatest.com>

 561-745-2780

 561-379-3141

 561-745-2781

 Bill@ExclusiveCommunities.com

 Gould@WilliamGould.com
