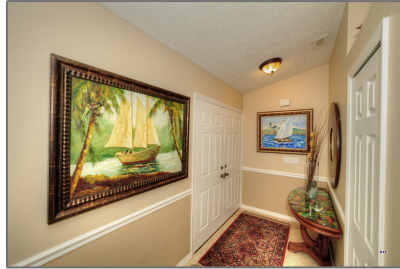


Single family

3,133 Sqft - 1423 Pitcher Road, Port Saint Lucie,
Florida 34952



Basic [Details](#)

| | |
|-----------------|----------------------|
| Property Type: | A |
| Listing Type: | Single family |
| Listing ID: | RX-10841828 |
| Price: | \$429,900 |
| Bedrooms: | 3 |
| Bathrooms: | 2 |
| Square Footage: | 3,133 Sqft |
| Year Built: | 1988 |

Features

| | | |
|---|-----------------|--------------------|
| ✓ | Heating System: | Central |
| ✓ | Cooling System: | Central |
| ✓ | Parking: | 2+ spaces |
| ✓ | Furnished: | Unfurnished |

Address [Map](#)

| | |
|----------------|-------------------------|
| Country: | US |
| State: | FL |
| County: | St. Lucie |
| City: | Port Saint Lucie |
| Zipcode: | 34952 |
| Street: | Pitcher |
| Street Number: | 1423 |
| Longitude: | W81° 41' 34.3" |
| Latitude: | N27° 16' 7.6" |



Bill Gould
<http://www.exclusivebetatest.com>
561-745-2780
561-379-3141
561-745-2781
Bill@ExclusiveCommunities.com
Gould@WilliamGould.com