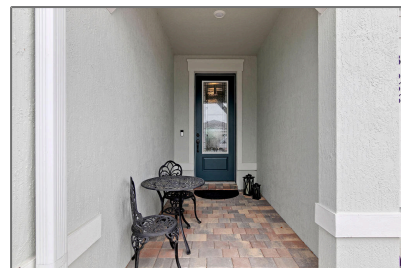


# Single family

2,080 Sqft - 13688 Gingerline Drive, Port Saint  
Lucie, Florida 34987



## Basic [Details](#)

Property Type:	<b>A</b>
Listing Type:	<b>Single family</b>
Listing ID:	<b>RX-10861139</b>
Price:	<b>\$575,000</b>
Bedrooms:	<b>2</b>
Bathrooms:	<b>2.1</b>
Half Bathrooms:	<b>1</b>
Square Footage:	<b>2,080 Sqft</b>
Year Built:	<b>2022</b>

## Features

✓	Heating System:	<a href="#">Central, Electric</a>
✓	Cooling System:	<a href="#">Central, Electric</a>
✓	Security:	<a href="#">Burglar alarm, Gate - unmanned</a>
✓	Parking:	<a href="#">Garage - attached, Driveway</a>
✓	Furnished:	<a href="#">Unfurnished</a>

## Address [Map](#)

Country:	<b>US</b>
State:	<b>FL</b>
County:	<b>St. Lucie</b>
City:	<b>Port Saint Lucie</b>
Zipcode:	<b>34987</b>
Street:	<b>Gingerline</b>
Street Number:	<b>13688</b>
Longitude:	<b>W81° 34' 22.2"</b>
Latitude:	<b>N27° 13' 29"</b>



Bill Gould  
<http://www.exclusivebetatest.com>  
☎ 561-745-2780  
☎ 561-379-3141  
☎ 561-745-2781  
✉ Bill@ExclusiveCommunities.com  
✉ Gould@WilliamGould.com