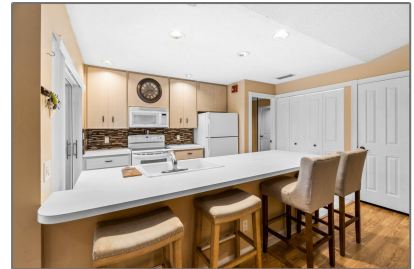


# Townhouse

1,200 Sqft - 1602 Springdale Court, Palm Beach Gardens, Florida 33403



## Basic [Details](#)

|                 |                    |
|-----------------|--------------------|
| Property Type:  | <b>A</b>           |
| Listing Type:   | <b>Townhouse</b>   |
| Listing ID:     | <b>RX-10861045</b> |
| Price:          | <b>\$355,000</b>   |
| Bedrooms:       | <b>2</b>           |
| Bathrooms:      | <b>2</b>           |
| Square Footage: | <b>1,200 Sqft</b>  |
| Year Built:     | <b>1990</b>        |

## Features

|   |                 |  |
|---|-----------------|--|
| ✓ | Heating System: | <a href="#">Central, Electric</a>              |
| ✓ | Cooling System: | <a href="#">Central, Ceiling fan, Electric</a> |
| ✓ | View:           | <a href="#">Other</a>                          |
| ✓ | Parking:        | <a href="#">Assigned, Guest</a>                |
| ✓ | Furnished:      | <a href="#">Unfurnished</a>                    |

## Address [Map](#)

|                |                           |
|----------------|---------------------------|
| Country:       | <b>US</b>                 |
| State:         | <b>FL</b>                 |
| County:        | <b>Palm Beach</b>         |
| City:          | <b>Palm Beach Gardens</b> |
| Zipcode:       | <b>33403</b>              |
| Street:        | <b>Springdale</b>         |
| Street Number: | <b>1602</b>               |
| Longitude:     | <b>W81° 54' 43"</b>       |
| Latitude:      | <b>N26° 48' 42.1"</b>     |



Bill Gould  
<http://www.exclusivebetatest.com>  
☎ 561-745-2780  
☎ 561-379-3141  
☎ 561-745-2781  
✉ Bill@ExclusiveCommunities.com  
✉ Gould@WilliamGould.com