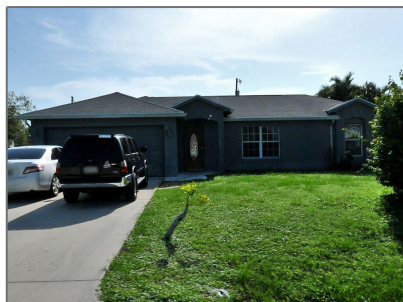


Single family

2,212 Sqft - 2721 Slade Place, Port Saint Lucie,
Florida 34953



Basic [Details](#)

Property Type: **A**

Listing Type: **Single family**

Listing ID: **RX-10860929**

Price: **\$349,999**

Bedrooms: **3**

Bathrooms: **2**

Square Footage: **2,212 Sqft**

Year Built: **2001**

Features

✓ Heating System: **Central**

✓ Cooling System: **Central, Ceiling fan**

✓ Parking: **2+ spaces, Driveway, Garage - detached**

✓ Furnished: **Unfurnished**

Address [Map](#)

Country: **US**

State: **FL**

County: **St. Lucie**

City: **Port Saint Lucie**

Zipcode: **34953**

Street: **Slade**

Street Number: **2721**

Longitude: **W81° 38' 17.2"**

Latitude: **N27° 15' 36"**



Bill Gould

 <http://www.exclusivebetatest.com>

 561-745-2780

 561-379-3141

 561-745-2781

 Bill@ExclusiveCommunities.com

 Gould@WilliamGould.com
