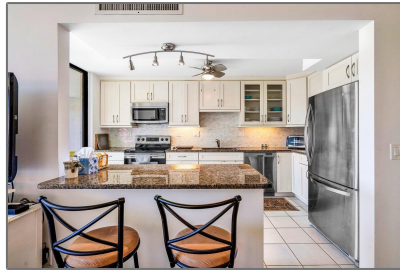


Condominium

1,305 Sqft - 5380 Woodland Lakes Drive 217, Palm
Beach Gardens, Florida 33418



Basic [Details](#)

Property Type:	A
Listing Type:	Condominium
Listing ID:	RX-10859772
Price:	\$399,000
Bedrooms:	2
Bathrooms:	2
Square Footage:	1,305 Sqft
Year Built:	1979

Features

✓	Heating System:	Central
✓	Cooling System:	Central, Ceiling fan
✓	View:	Lake
✓	Security:	Lobby, Entry phone
✓	Parking:	Assigned, Covered, Carport - detached
✓	Furnished:	Furnished

Address [Map](#)

Country:	US
State:	FL
County:	Palm Beach
City:	Palm Beach Gardens
Zipcode:	33418
Street:	Woodland Lakes
Street Number:	5380
Longitude:	W81° 52' 54.4"
Latitude:	N26° 50' 14.6"



Bill Gould

 <http://www.exclusivebetatest.com>

 561-745-2780

 561-379-3141

 561-745-2781

 Bill@ExclusiveCommunities.com

 Gould@WilliamGould.com
