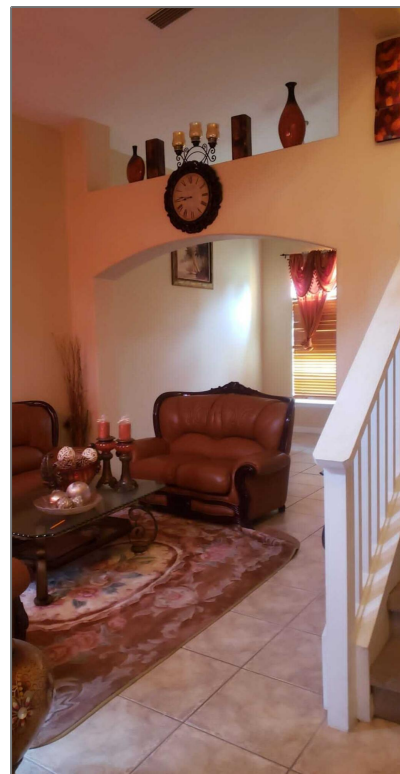


Single family

2,732 Sqft - 1013 Pantheon Drive, Kissimmee,
Florida 34759



Basic [Details](#)

Property Type:	A
Listing Type:	Single family
Listing ID:	RX-10811794
Price:	\$290,000
Bedrooms:	4
Bathrooms:	2.1
Half Bathrooms:	1
Square Footage:	2,732 Sqft
Year Built:	2005

Address [Map](#)

Country:	US
State:	FL

Features

✓	Heating System:	Central, Electric
✓	Cooling System:	Central, Ceiling fan, Electric
✓	Furnished:	Unfurnished

County:	Osceola
City:	Kissimmee
Zipcode:	34759
Street:	Pantheon
Street Number:	1013
Longitude:	W82° 33' 25.1"
Latitude:	N28° 6' 43.5"

Agent [Info](#)



Bill Gould
<http://www.exclusivebetatest.com>
561-745-2780
561-379-3141
561-745-2781
Bill@ExclusiveCommunities.com
Gould@WilliamGould.com