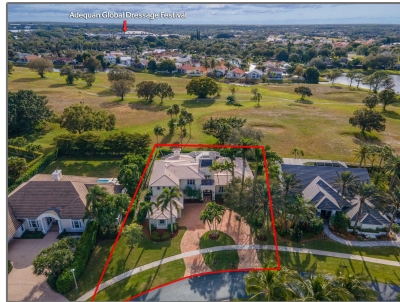


# Single family

5,266 Sqft - 2351 Newbury Drive, Wellington,  
Florida 33414



## Basic [Details](#)

Property Type:	<b>A</b>
Listing Type:	<b>Single family</b>
Listing ID:	<b>RX-10858762</b>
Price:	<b>\$1,790,000</b>
Bedrooms:	<b>4</b>
Bathrooms:	<b>4.2</b>
Half Bathrooms:	<b>2</b>
Square Footage:	<b>5,266 Sqft</b>
Year Built:	<b>2000</b>

## Features

✓	Swimming Pool:	<b>Heated, Inground, Salt chlorination</b>
✓	Heating System:	<b>Central</b>
✓	Cooling System:	<b>Central, Ceiling fan</b>
✓	Security:	<b>Gate - manned</b>
✓	Parking:	<b>2+ spaces, Garage - attached, Drive - circular</b>
✓	Furnished:	<b>Unfurnished, Furniture negotiable</b>

## Address [Map](#)

Country:	<b>US</b>
State:	<b>FL</b>
County:	<b>Palm Beach</b>
City:	<b>Wellington</b>
Zipcode:	<b>33414</b>
Street:	<b>Newbury</b>
Street Number:	<b>2351</b>
Longitude:	<b>W81° 44' 38.2"</b>
Latitude:	<b>N26° 38' 49.7"</b>

## Agent Info

---



Bill Gould

<http://www.exclusivebetatest.com>

561-745-2780

561-379-3141

561-745-2781

Bill@ExclusiveCommunities.com

Gould@WilliamGould.com

---