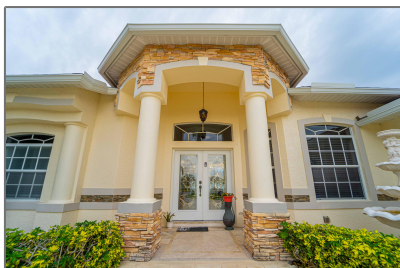


# Single family

2,794 Sqft - 5965 Wolverine Road, Port Saint  
Lucie, Florida 34986



## Basic [Details](#)

Property Type:	<b>A</b>
Listing Type:	<b>Single family</b>
Listing ID:	<b>RX-10858286</b>
Price:	<b>\$494,000</b>
Bedrooms:	<b>3</b>
Bathrooms:	<b>2.1</b>
Half Bathrooms:	<b>1</b>
Square Footage:	<b>2,794 Sqft</b>
Year Built:	<b>2002</b>

## Features

✓	Heating System:	<b>Central</b>
✓	Cooling System:	<b>Central, Ceiling fan</b>
✓	Parking:	<b>2+ spaces, Garage - attached</b>
✓	Furnished:	<b>Unfurnished</b>

## Address [Map](#)

Country:	<b>US</b>
State:	<b>FL</b>
County:	<b>St. Lucie</b>
City:	<b>Port Saint Lucie</b>
Zipcode:	<b>34986</b>
Street:	<b>Wolverine</b>
Street Number:	<b>5965</b>
Longitude:	<b>W81° 36' 12.6"</b>
Latitude:	<b>N27° 20' 21.4"</b>



Bill Gould

 <http://www.exclusivebetatest.com>

 561-745-2780

 561-379-3141

 561-745-2781

 [Bill@ExclusiveCommunities.com](mailto:Bill@ExclusiveCommunities.com)

 [Gould@WilliamGould.com](mailto:Gould@WilliamGould.com)

---