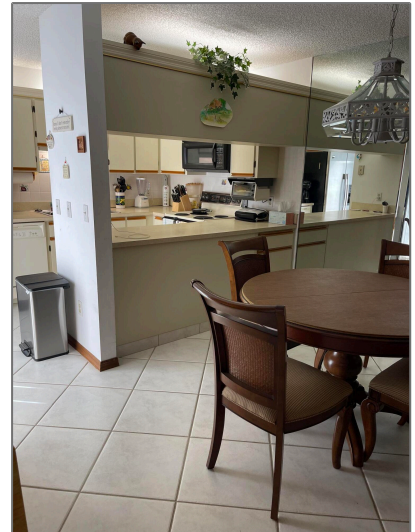


# Townhouse

2,222 Sqft - 2101 Round Table Drive, Port Saint  
Lucie, Florida 34952



## Basic [Details](#)

Property Type:	<b>A</b>
Listing Type:	<b>Townhouse</b>
Listing ID:	<b>RX-10845856</b>
Price:	<b>\$239,000</b>
Bedrooms:	<b>2</b>
Bathrooms:	<b>2.1</b>
Half Bathrooms:	<b>1</b>
Square Footage:	<b>2,222 Sqft</b>
Year Built:	<b>1987</b>

## Address [Map](#)

Country:	<b>US</b>
State:	<b>FL</b>
County:	<b>St. Lucie</b>
City:	<b>Port Saint Lucie</b>
Zipcode:	<b>34952</b>

## Features

✓	Heating System:	<b>Central, Electric</b>
✓	Cooling System:	<b>Central, Ceiling fan, Electric</b>
✓	Parking:	<b>Assigned, Carport - detached</b>
✓	Furnished:	<b>Furnished</b>

Street:	<b>Round Table</b>
Street Number:	<b>2101</b>
Longitude:	<b>W81° 43' 3.1"</b>
Latitude:	<b>N27° 17' 0.4"</b>

Agent [Info](#)

---



Bill Gould  
<http://www.exclusivebetatest.com>  
561-745-2780  
561-379-3141  
561-745-2781  
Bill@ExclusiveCommunities.com  
Gould@WilliamGould.com

-

---