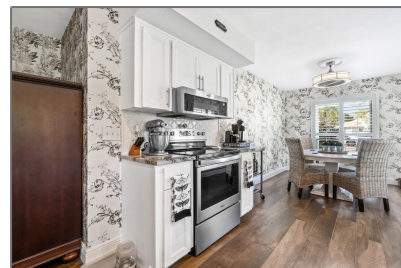
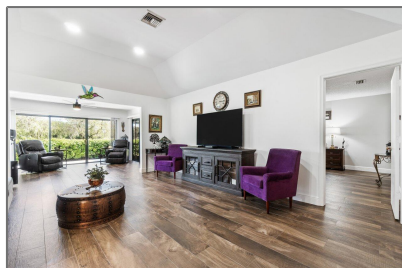
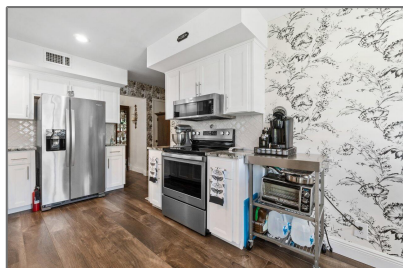


# Single family

2,249 Sqft - 13864 Whispering Lakes Lane, Palm  
Beach Gardens, Florida 33418



## Basic [Details](#)

|                 |                      |
|-----------------|----------------------|
| Property Type:  | <b>A</b>             |
| Listing Type:   | <b>Single family</b> |
| Listing ID:     | <b>RX-10846862</b>   |
| Price:          | <b>\$599,000</b>     |
| Bedrooms:       | <b>2</b>             |
| Bathrooms:      | <b>2</b>             |
| Square Footage: | <b>2,249 Sqft</b>    |
| Year Built:     | <b>1978</b>          |

## Features

|   |                 |  |
|---|-----------------|--|
| ✓ | Heating System: | <a href="#">Central, Electric</a>              |
| ✓ | Cooling System: | <a href="#">Central, Electric</a>              |
| ✓ | View:           | <a href="#">Golf, Lake</a>                     |
| ✓ | Security:       | <a href="#">Gate - manned, Security patrol</a> |
| ✓ | Furnished:      | <a href="#">Unfurnished</a>                    |

## Address [Map](#)

|                |                           |
|----------------|---------------------------|
| Country:       | <b>US</b>                 |
| State:         | <b>FL</b>                 |
| County:        | <b>Palm Beach</b>         |
| City:          | <b>Palm Beach Gardens</b> |
| Zipcode:       | <b>33418</b>              |
| Street:        | <b>Whispering Lakes</b>   |
| Street Number: | <b>13864</b>              |
| Longitude:     | <b>W81° 52' 3.6"</b>      |
| Latitude:      | <b>N26° 52' 50.8"</b>     |



Bill Gould

 <http://www.exclusivebetatest.com>

 561-745-2780

 561-379-3141

 561-745-2781

 [Bill@ExclusiveCommunities.com](mailto:Bill@ExclusiveCommunities.com)

 [Gould@WilliamGould.com](mailto:Gould@WilliamGould.com)

---