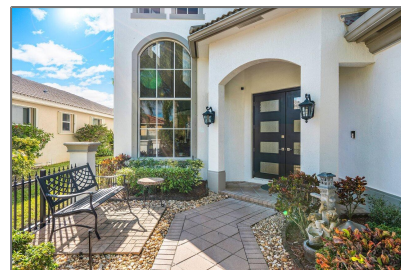


Single family

5,238 Sqft - 1819 Waldorf Drive, Royal Palm Beach, Florida 33411



Basic [Details](#)

| | |
|-----------------|----------------------|
| Property Type: | A |
| Listing Type: | Single family |
| Listing ID: | RX-10855101 |
| Price: | \$899,000 |
| Bedrooms: | 4 |
| Bathrooms: | 4 |
| Square Footage: | 5,238 Sqft |
| Year Built: | 2004 |

Features

| | | |
|---|-----------------|---------------------------------------|
| ✓ | Heating System: | Central, Electric |
| ✓ | Cooling System: | Central, Ceiling fan, Electric |
| ✓ | View: | Golf, Garden |
| ✓ | Security: | Gate - unmanned, Entry phone |
| ✓ | Parking: | 2+ spaces, Garage - attached |
| ✓ | Furnished: | Unfurnished |

Address [Map](#)

| | |
|----------------|-------------------------|
| Country: | US |
| State: | FL |
| County: | Palm Beach |
| City: | Royal Palm Beach |
| Zipcode: | 33411 |
| Street: | Waldorf |
| Street Number: | 1819 |
| Longitude: | W81° 45' 23.2" |
| Latitude: | N26° 42' 36.7" |



Bill Gould

 <http://www.exclusivebetatest.com>

 561-745-2780

 561-379-3141

 561-745-2781

 Bill@ExclusiveCommunities.com

 Gould@WilliamGould.com
