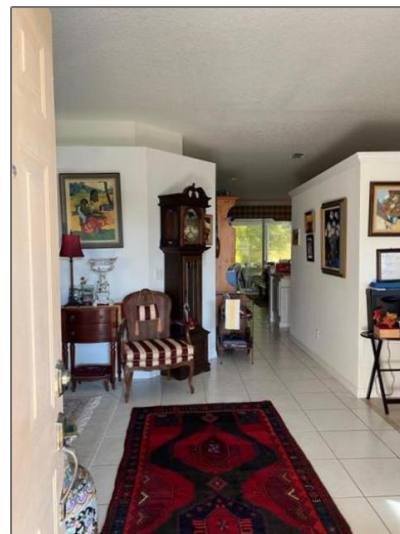


# Single family

2,535 Sqft - 536 Cortina Lane, Port Saint Lucie,  
Florida 34986



## Basic [Details](#)

Property Type:	<b>A</b>
Listing Type:	<b>Single family</b>
Listing ID:	<b>RX-10852640</b>
Price:	<b>\$349,000</b>
Bedrooms:	<b>2</b>
Bathrooms:	<b>2</b>
Square Footage:	<b>2,535 Sqft</b>
Year Built:	<b>1997</b>

## Address [Map](#)

Country:	<b>US</b>
State:	<b>FL</b>
County:	<b>St. Lucie</b>
City:	<b>Port Saint Lucie</b>
Zipcode:	<b>34986</b>
Street:	<b>Cortina</b>

## Features

✓	Heating System:	<b>Central, Electric</b>
✓	Cooling System:	<b>Central, Ceiling fan, Electric</b>
✓	Security:	<b>Gate - manned</b>
✓	Parking:	<b>Garage - attached</b>
✓	Furnished:	<b>Unfurnished</b>

Street Number:	536
Longitude:	W81° 37' 20.2"
Latitude:	N27° 19' 39.3"

Agent [Info](#)

---



Bill Gould  
<http://www.exclusivebetatest.com>  
561-745-2780  
561-379-3141  
561-745-2781  
Bill@ExclusiveCommunities.com  
Gould@WilliamGould.com

-

---