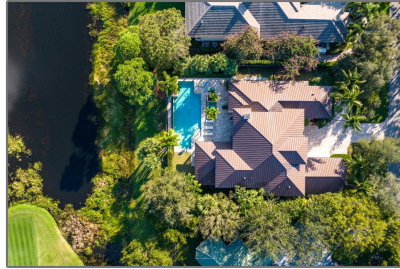


# Single family

8,222 Sqft - 13360 Marsh Landing(s), Palm Beach  
Gardens, Florida 33418



## Basic [Details](#)

Property Type:	<b>A</b>
Listing Type:	<b>Single family</b>
Listing ID:	<b>RX-10852113</b>
Price:	<b>\$6,100,000</b>
Bedrooms:	<b>5</b>
Bathrooms:	<b>5.2</b>
Half Bathrooms:	<b>2</b>
Square Footage:	<b>8,222 Sqft</b>
Year Built:	<b>2007</b>

## Features

✓	Swimming Pool:	Heated, Inground, Spa, Salt chlorination
✓	Heating System:	Central, Electric, Zoned
✓	Cooling System:	Central, Ceiling fan, Electric
✓	View:	Golf, Lake
✓	Security:	Gate - manned, Security patrol, Security sys- owned
✓	Parking:	2+ spaces, Garage - attached, Driveway
✓	Furnished:	Furniture negotiable

## Address [Map](#)

Country:	<b>US</b>
State:	<b>FL</b>
County:	<b>Palm Beach</b>
City:	<b>Palm Beach Gardens</b>
Zipcode:	<b>33418</b>
Street:	<b>Marsh</b>
Street Number:	<b>13360</b>

Longitude:W81° 51' 14.6"

Latitude:N26° 52' 26.1"

Agent [Info](#)

---



Bill Gould

- <http://www.exclusivebetatest.com>
- 561-745-2780
- 561-379-3141
- 561-745-2781
- Bill@ExclusiveCommunities.com
- Gould@WilliamGould.com

-

---