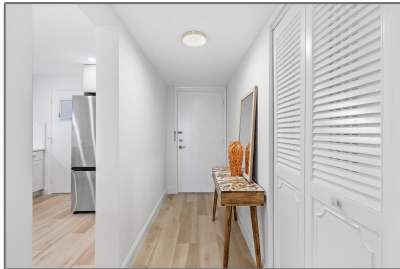


Condominium

1,047 Sqft - 145 Ocean Avenue 210, Palm Beach Shores, Florida 33404



Basic [Details](#)

Property Type:	F
Listing Type:	Condominium
Listing ID:	RX-10850571
Price:	\$4,000
Bedrooms:	2
Bathrooms:	2
Square Footage:	1,047 Sqft
Year Built:	1972

Features

✓	Heating System:	Central
✓	Cooling System:	Central
✓	View:	Ocean, Clubhouse
✓	Parking:	Assigned, Guest, Covered, Vehicle restrictions, Carport - attached

Address [Map](#)

Country:	US
State:	FL
County:	Palm Beach
City:	Palm Beach Shores
Zipcode:	33404
Street:	Ocean
Street Number:	145
Longitude:	W81° 58' 5.1"
Latitude:	N26° 46' 46.8"



Bill Gould

 <http://www.exclusivebetatest.com>

 561-745-2780

 561-379-3141

 561-745-2781

 Bill@ExclusiveCommunities.com

 Gould@WilliamGould.com
