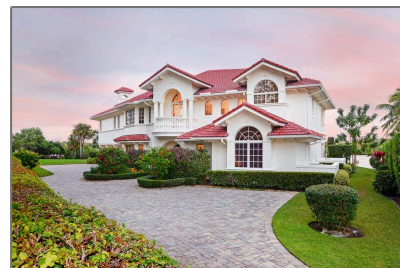


# Single family

10,868 Sqft - 12010 Riverbend Road, Port Saint  
Lucie, Florida 34984



## Basic [Details](#)

Property Type:	<b>A</b>
Listing Type:	<b>Single family</b>
Listing ID:	<b>RX-10834172</b>
Price:	<b>\$3,850,000</b>
Bedrooms:	<b>5</b>
Bathrooms:	<b>5.3</b>
Half Bathrooms:	<b>3</b>
Square Footage:	<b>10,868 Sqft</b>
Year Built:	<b>2006</b>

## Features

✓	Swimming Pool:	<a href="#">Heated, Inground, Spa</a>
✓	Heating System:	<a href="#">Central, Electric</a>
✓	Cooling System:	<a href="#">Central, Ceiling fan, Electric</a>
✓	View:	<a href="#">River</a>
✓	Security:	<a href="#">Burglar alarm, Gate - unmanned</a>
✓	Parking:	<a href="#">2+ spaces, Garage - attached, Driveway, Drive - decorative</a>
✓	Furnished:	<a href="#">Furnished</a>

## Address [Map](#)

Country:	<b>US</b>
State:	<b>FL</b>
County:	<b>St. Lucie</b>
City:	<b>Port Saint Lucie</b>
Zipcode:	<b>34984</b>
Street:	<b>Riverbend</b>
Street Number:	<b>12010</b>
Longitude:	<b>W81° 40' 27.1"</b>

Latitude: **N27° 14' 51.4"**

Agent [Info](#)

---



Bill Gould  
<http://www.exclusivebetatest.com>  
☎ 561-745-2780  
☎ 561-379-3141  
☎ 561-745-2781  
✉ Bill@ExclusiveCommunities.com  
✉ Gould@WilliamGould.com

---