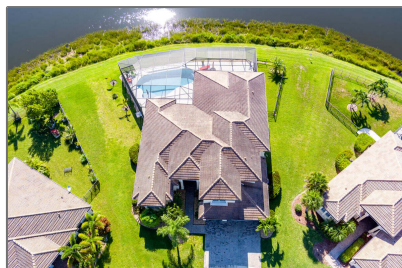
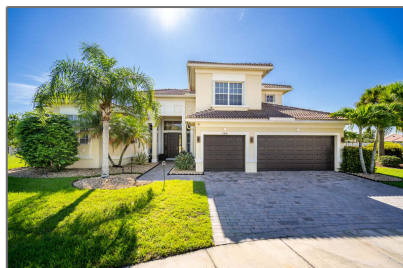


Single family

7,373 Sqft - 11416 Aventino Drive, Port Saint
Lucie, Florida 34987



Basic [Details](#)

Property Type:	A
Listing Type:	Single family
Listing ID:	RX-10830855
Price:	\$898,900
Bedrooms:	5
Bathrooms:	5
Square Footage:	7,373 Sqft
Year Built:	2007

Features

✓	Swimming Pool:	Inground, Screened, Gunite, Salt chlorination
✓	Heating System:	Central, Electric
✓	Cooling System:	Central, Electric
✓	View:	Lake
✓	Security:	Gate - unmanned
✓	Parking:	Garage - attached
✓	Furnished:	Unfurnished

Address [Map](#)

Country:	US
State:	FL
County:	St. Lucie
City:	Port Saint Lucie
Zipcode:	34987
Street:	Aventino
Street Number:	11416
Longitude:	W81° 33' 27.8"
Latitude:	N27° 16' 34.2"



Bill Gould

 <http://www.exclusivebetatest.com>

 561-745-2780

 561-379-3141

 561-745-2781

 Bill@ExclusiveCommunities.com

 Gould@WilliamGould.com
