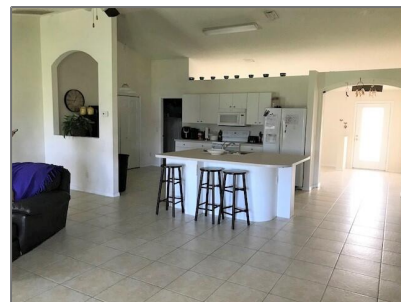


Single family

2,680 Sqft - 574 Columbus Drive, Port Saint Lucie,
Florida 34953



Basic [Details](#)

Property Type:	A
Listing Type:	Single family
Listing ID:	RX-10829364
Price:	\$389,000
Bedrooms:	3
Bathrooms:	2
Square Footage:	2,680 Sqft
Year Built:	2002

Features

✓	Heating System:	Central, Electric
✓	Cooling System:	Central, Electric
✓	View:	Garden
✓	Parking:	2+ spaces, Garage - attached
✓	Furnished:	Unfurnished

Address [Map](#)

Country:	US
State:	FL
County:	St. Lucie
City:	Port Saint Lucie
Zipcode:	34953
Street:	Columbus
Street Number:	574
Longitude:	W81° 38' 6.5"
Latitude:	N27° 12' 43.9"



Bill Gould

 <http://www.exclusivebetatest.com>

 561-745-2780

 561-379-3141

 561-745-2781

 Bill@ExclusiveCommunities.com

 Gould@WilliamGould.com
